

BWD JUST THE FACTS

Your Source For Actuator Coverage



1050+

Part Numbers covering more than 197 Million VIO



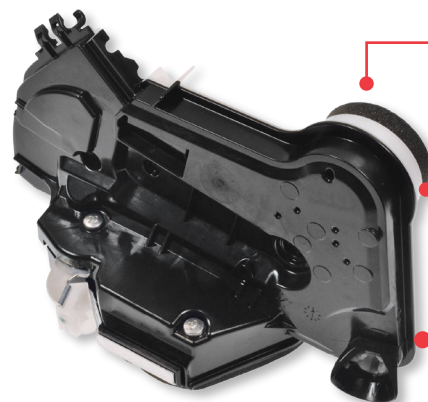
Growing line of integrated door lock, liftgate, tailgate, and trunk lock actuators



Meets Federal Motor Vehicle Safety Standards (FMVSS) requirements for door ejection safety

THE NEW NORM FOR DOOR LOCK ACTUATION

Integrated door lock actuators combine electrical actuation with latching mechanization. BWD® offers a line of Integrated Door Lock Actuators, all direct OE replacements that ensure proper fit, form, and function.



'Plug and play' design
No additional programming required

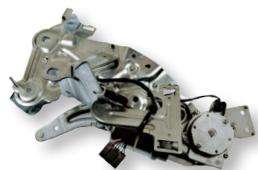
Meets FMVSS No. 206 requirements for door ejection safety

Robust construction ensures long, trouble-free service life

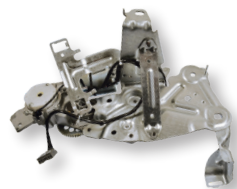
AFTERMARKET EXCLUSIVE

DLA11423
Lexus / Toyota (Left Front)
(2019-14)
VIO Over 5 Million

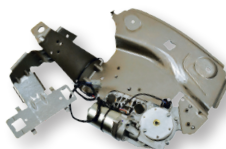
GROWING LINE OF DOOR LOCK, LIFTGATE, TAILGATE, AND TRUNK LOCK ACTUATORS



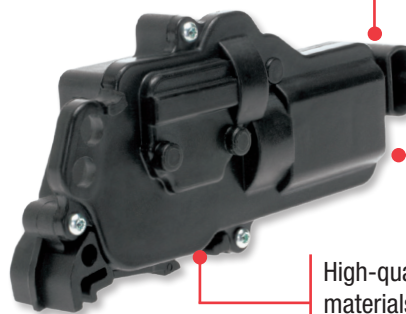
DLA11441
Cadillac / Chevrolet / GMC
(2009-07)
VIO Over 1 million



DLA11442
Cadillac / Chevrolet / GMC
(2014-10)
VIO Over 829,000



DLA11443
Buick / Chevrolet
(2017-09)
VIO Over 1.3 Million



Direct-fit OE replacement ensures proper fit, form, and function for ease of installation

Undergoes extensive testing to ensure reliability

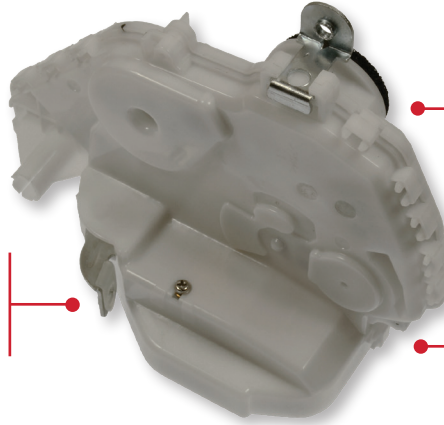
High-quality materials withstand extreme conditions

DLA238
Ford / Lincoln / Mercury (2017-99)
VIO Over 10.4 Million

Integrated Door Lock Actuators

'Plug and play' design means no wire splicing for easier installation

Meets FMVSS No. 206 requirements for door ejection safety



Robust construction ensures long, trouble-free service life

Designed and tested to OE specifications for a direct-fit replacement

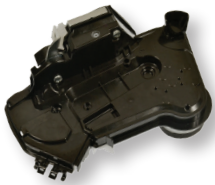
AFTERMARKET EXCLUSIVE

DLA1439

Honda Pilot (Front Left)
(2015-09)

VIO Over 780,000

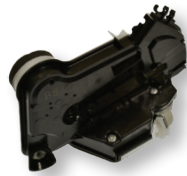
First to Aftermarket



DLA11424

Lexus / Toyota (Right Front)
(2019-14)

VIO Over 5 Million



DLA11363

Toyota Corolla (2019-14)

VIO Over 2.05 Million



DLA11445

Cadillac / Chevy/ GMC (2015-12)

VIO Over 1.4 Million



DLA11413

Ford F-150 (Front Left)
(2019-18)

VIO Over 1.2 Million

Common Causes of Failure:

- Motor failure from wear-and-tear and carbon buildup
- Sustained exposure to long pulse radio frequency
- Damaged cable, which can damage actuator housing
- Internal circuitry failure from normal operation (3 years/36,000 miles)

Diagnosis Tips:

- Door lock that functions with passenger-side switch but not driver-side? It's likely the driver-side switch.
- Door lock that functions in only one direction? It's likely the door lock actuator.
- All door locks function in only one direction? It's likely the door lock switch.