

Diesel Parts Identification for Warranty Purposes



Table of Contents

27190	2	35528	15	67528	3
27613	2	35531	13	67532	8
35508	15	35532	13	67533	8
35510	15	37500	10	67560	4
35518	15	37501	10	67561	7
35519	15	37502	10	67562	7
35520K	15	37503	10	67616	9
35521	15	37505	11	67617	9
35522	14	37506	12	67836	9
35523	14	63871	6	67837	9
35524	13	63877	5	67918	9
35525	13	67320	2		
35526	13	67526	2		
35527	13	67527	3		

7.3L Ford Powerstroke Injector Identification

BWD Product

- 27190, 27613, 67320, 67526
- Metal plate on top of the solenoid laser etched with the SMP logo or Pure Power logo
- Older production have SMP logo etched on the collet



NON-BWD Product

- No metal plate with logo on top of the solenoid.
- Hand etched number on the collet



6.0L Ford Powerstroke Injector Identification

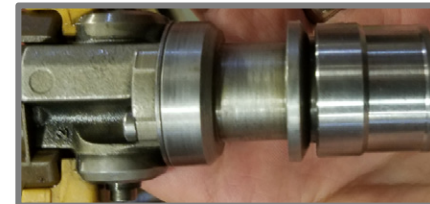
BWD Product

- 67527, 67528
- Have the Pure Power Technologies logo etched on the body of the injector
- Earlier SMP product carried SMP logo and date codes that are etched into the body of the injector as seen in the image on the right



NON-BWD Product

- No Pure Power logo or SMP markings



6.4L Ford Powerstroke Injector Identification

BWD Product

- 67560
- Have the Pure Power Technologies logo etched on the body of the injector



NON-BWD Product

- No Pure Power logo or SMP markings



6.6L Duramax Injector Identification (63877)

BWD Product

- 63877
- Multiple styles of GM 6.6L Duramax injectors
- SMP logo is laser etched on the body of the injector



NON-BWD Product

- No SMP markings



6.6L Duramax Injector Identification (63871)

BWD Product

- 63871
- Multiple styles of GM 6.6L Duramax injectors
- SMP logo is laser etched on the body of the injector



NON-BWD Product

- No SMP markings



6.6L Duramax Injector Identification (67561, 67562)

BWD Product

- 67561, 67562
- Multiple styles of GM 6.6L Duramax injectors
- SMP logo is laser etched on the body of the injector



NON-BWD Product

- No SMP markings



5.9L Dodge Cummins Injector Identification (67532, 67533)

BWD Product

- 67532, 67533
- The SMP logo is laser etched on the body of the injector



NON-BWD Product

- No SMP markings



6.7L Dodge Cummins Injector Identification

BWD Product

- 67616, 67617, 67836, 67837, 67918
- SMP logo is laser etched on the body



NON-BWD Product

- No SMP marking
- May have hand etched numbers on the body.



7.3L Ford Powerstroke HPOP Identification

BWD Product

- 37500, 37501, 37502, 37503
- SMP logo is etched on the end cap



NON-BWD Product

- No SMP markings



6.0L Ford Powerstroke HPOP Identification

BWD Product

- 37505
- SMP logo is etched on the end cap



NON-BWD Product

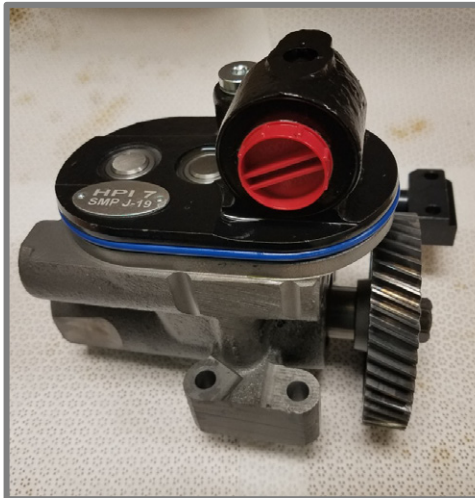
- No SMP markings



6.0L Ford Powerstroke HPOP Identification

BWD Product

- 37506
- SMP logo is etched on a small placard attached to the top of the unit
- Early units use a rectangular placard
Later units are oval in shape



NON-BWD Product

- No SMP markings



6.6L GM & 6.7L Dodge Injection Pump Identification

BWD Product

- 35524, 35525, 35526, 35527, 35531, 35532
- SMP logo and part number are stamped into the body of the pump



NON-BWD Product

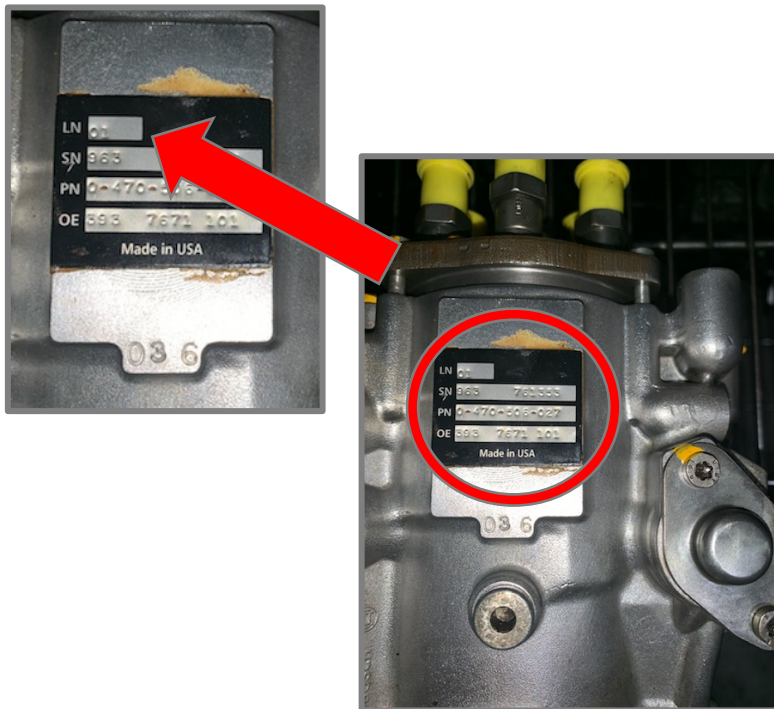
- No SMP markings



5.9L Dodge Cummins VP44 Injection Pump Identification

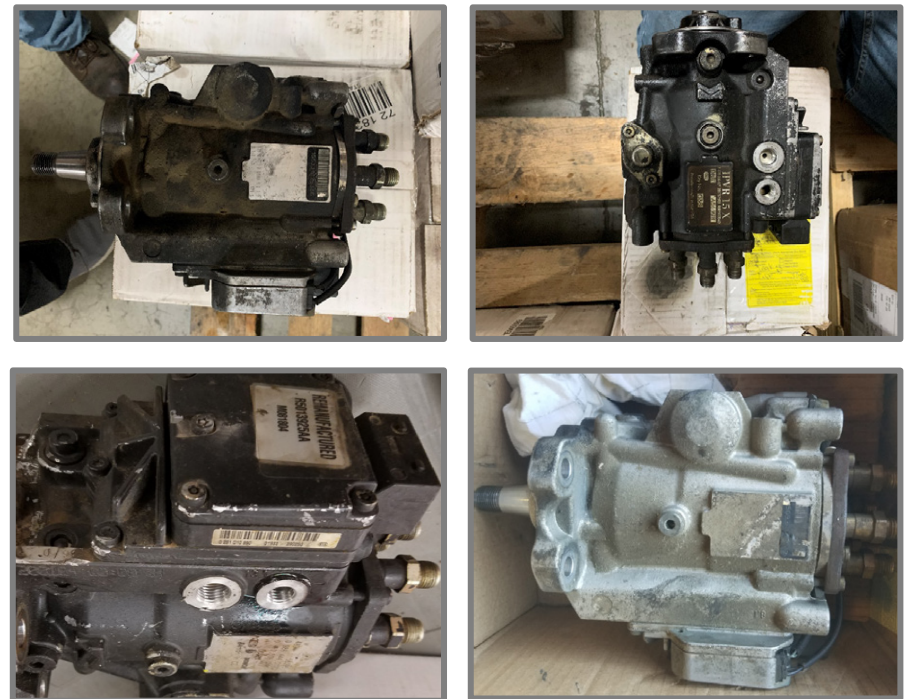
BWD Product

- 35522, 35523
- “01” designation in the top space of the placard



NON-BWD Product

- No SMP markings
- No “01” designation



6.2L/6.5L GM – 6.9L/7.3L Injection Pump Identification

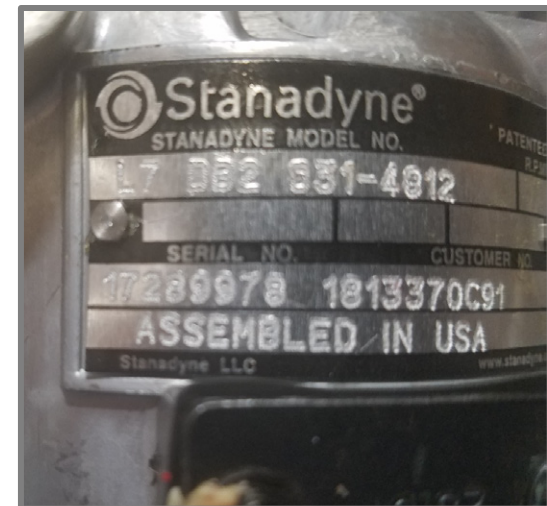
BWD Product

- 35508, 35510, 35518, 35519, 35520K, 35521, 35528
- SMP name and part number stamped on Stanadyne logo



NON-BWD Product

- No SMP markings



SMP Identification for Balance of the SMP Diesel Line

- Prior to the current identification process that is in use today, SMP used the SMP logo accompanied by a letter designation and a Julian date code.
- A sample would look like this: **“SMP-A 495 16321”**
- The letter after the SMP logo may vary, sample letter codes are: **A, B, C, D, E, F, G**. Any of these letter codes with “SMP” before them confirms that this is SMP product.
- These are primarily be found on injectors, high pressure oil pumps and high-pressure injection pumps. Products with these types of date codes and identification are older production and have worked their way through the system but they occasionally show up and should be properly identified and handled accordingly.
- **Be sure to properly identify parts before submitting for warranty.**
- If there is a question about product source, contact your local SMP representative.