

TechSmartParts.com

New Parts Guide

Summer 2014



Every part we put into a TechSmart® box is a direct result of a conversation with a professional technician.

TechSmart® “Blue Spring” Fuel Pressure Regulator Upgrade Kit



R81001
Ford Excursion 6.0L 2004-03
Ford F-250 Super Duty 6.0L 2007-03
Ford F-350 Super Duty 6.0L 2007-03
VIO over 726,000

The TechSmart® kit includes the spring, O-Rings and hardware to rebuild the fuel filter housing.

Over time the stock spring can weaken, resulting in a drop in fuel pressure that can damage the injector. Symptoms of a weak spring include hard starting, stalling, poor fuel mileage and poor acceleration. With the TechSmart® R81001 kit installed, you will see an increase of 10-15 PSI of fuel pressure. The increased pressure will ensure that adequate fuel is present to dampen and lubricate the internal components of the fuel injectors to maximize performance and injector life.

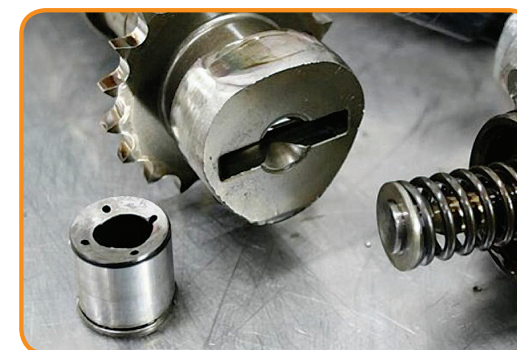


TechSmart® High-Pressure Fuel Pump Cam Follower

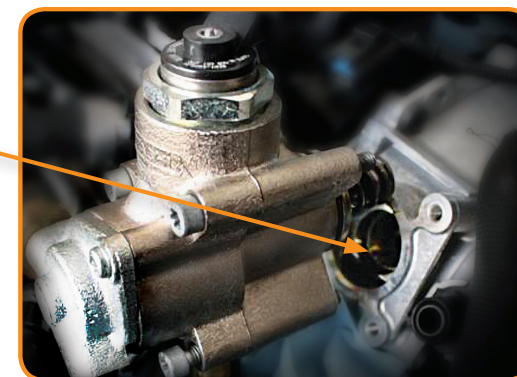
T48001
Fuel Pump Cam Follower
VW/Audi 2.0T 2013-06
VIO over 1.0 Million



New TechSmart® unit



Catastrophic Failure



TechSmart® now offers a high-quality direct replacement High-Pressure Fuel Pump Cam Follower for 2013-2006 VW/Audi 2.0T.

The low-friction coating on the original units can wear down over time causing excess friction against the cam lobe and high-pressure fuel pump plunger. This can lead to catastrophic failure and an expensive repair. Checking for wear on the original unit and replacing the cam follower with the TechSmart® T48001 will save money in the long run.

**1 PART
ONE
1 CALL**

We know that time is money, and waiting for multiple parts to come in to finish a job means that the shop is losing out. TechSmart® is committed to providing everything you need in ONE box to do the job right... the first time. ONE Part. ONE Call.



NEW



Q21002
Cam Gear Wedge Tool
Ford Trucks 2013-05
VIO over 3 million

PROBLEM SOLVER

*High-durometer polyurethane tool for cam phaser removal and installation on Ford 4.6L and 5.4L V8 engines
Use with S21001 Cam Phaser*

NEW



S20070
Electronic Throttle Body
Audi 2011-05
Volkswagen 2013-06
VIO over 850,000

100% NEW NOT REMAN

TechSmart Electronic Throttle Bodies are 100% new, NOT reman

NEW



S20074
Electronic Throttle Body
BMW 2013-07
VIO over 600,000

100% NEW NOT REMAN

TechSmart Electronic Throttle Bodies are 100% new, NOT reman

NEW



S20083
Electronic Throttle Body
Ford F-150 5.0L 2013-11
Ford Mustang 5.0L 2013-11
VIO over 400,000

100% NEW NOT REMAN

TechSmart Electronic Throttle Bodies are 100% new, NOT reman

NEW

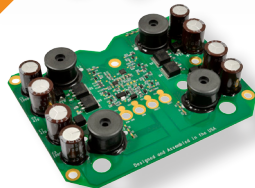


Z63010
Engine Coolant Air Bleeder Valve
Chrysler Sebring 2.7L 2006-01
Dodge Stratus 2.7L 2006-01
VIO over 450,000

PROBLEM SOLVER

TechSmart exclusive design features an extra hex nut for holding the valve in place with a wrench while bleeding the coolant, preventing damage to the valve

NEW

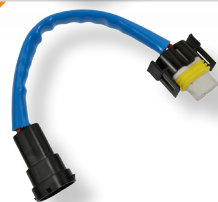


R76001
Fuel Injector Control Module (a.k.a. FICM)
Ford Trucks 2010-03
VIO over 700,000

PROBLEM SOLVER

*Designed with gold plated contacts, revised circuit layout and custom electronics
Restore driveability, control heat and maximize board life*

NEW

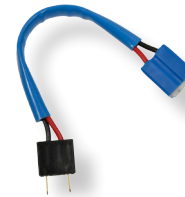


F90006
Headlight Wiring Harness

PROBLEM SOLVER

High-temp ceramic design for H11 bulbs prevents the connector from melting when using high-intensity aftermarket light bulbs

NEW



F90007
Headlight Wiring Harness

PROBLEM SOLVER

High-temp ceramic design for H7 bulbs prevents the connector from melting when using high intensity aftermarket light bulbs

NEW



F90009
Headlight Wiring Harness

PROBLEM SOLVER

High-temp ceramic design for 9006 & 9006XS bulbs prevents the connector from melting when using high-intensity aftermarket light bulbs

NEW



C02043
Keyless Entry Transmitter
Cadillac Escalade 2013-11
VIO over 145,000

THINK TECHSMART FIRST

*High-quality direct replacement for failed OE key fobs
TechSmart unit matches fit, form, and function of the original unit*

NEW



C02049
Keyless Entry Transmitter
Chevrolet/GM Vans 2011
VIO over 325,000

THINK TECHSMART FIRST

*High-quality direct replacement for failed OE key fobs
TechSmart unit matches fit, form, and function of the original unit*

NEW



T36028
Park Assist Sensor
Ford F-150 2013-09

**1.4 MILLION
VIO**

NEW



T42005
Throttle Position Sensor Repair Kit
Honda Civic 1.7L 2005-01

**1.4 MILLION
VIO**

NEW



R56002
Variable Intake Manifold Actuator
Mazda 3 2009-04
VIO over 235,000

PROBLEM SOLVER

Replace just the failed unit instead of the entire expensive intake manifold assembly on Mazda 3 2.0L engines

**CROWD
SOURCED**

Every part we put into a TechSmart box is a direct result of a conversation with a technician. Technicians ask, and we deliver.



TechSmart® Headlight Level Sensor



TechSmart® offers a line of premium Headlight Level Sensors for today's most popular import applications. Headlight level sensors work with a vehicle's self-levelling headlight system and adjust the headlight height in relation to the vehicle height. If the vehicle's trunk is loaded and the rear is sagging, this would typically cause the lights to shine high. With operational headlight level sensors, the headlight level would be adjusted to compensate for the rear being low. When the OE sensor fails you're left with a headlight that will shine either too high or too low, creating a dangerous driving situation for vehicles on the road. When the original fails trust TechSmart® to provide the highest-quality replacement solution for this issue.



Functioning Headlight Level Sensor
Headlight beams remain level despite vehicle height.



Malfunctioning Headlight Level Sensor
Headlight beams angle up due to vehicle height reducing driver visibility.

HID Headlight Ballast

TechSmart® delivers a line of high-quality, direct replacement HID Headlight Ballasts for domestic and import vehicles. HID headlights require a ballast to power them since they do not run on low-voltage current. When a ballast overheats and fails, the HID light system becomes inoperative. TechSmart's line of HID Headlight Ballasts covers today's most popular domestic and import applications. A high attention to quality ensures that this advanced safety feature functions properly each and every time you install a new TechSmart® unit.



Variable Intake Manifold Actuator Repair Kit

The variable intake manifold on 2011-06 V6 Mercedes Benz vehicles have a plastic hinge that can easily break, resulting in a stuck intake manifold flap, a P2006 trouble code, and a costly repair bill.

TechSmart® has designed a new Smart Solution that replaces just the failed intake with a newly designed metal one to ensure that there won't be any intake linkage failures due to a broken hinge. The TechSmart® Z56003 kit includes a new metal hinge, spacer, and intake manifold gaskets for a highly-effective and significantly less expensive repair.



New TechSmart® unit installed on an old manifold

Engine Coolant Bleeder Valve

Chrysler 2.7L engines utilize an air coolant bleeder on top of the engine. Over time, the constant hot and cold conditions can cause the housing to weaken and bleed screw to stick. Excess force used to open a stuck bleed screw can result in a cracked housing.

TechSmart® added an extra hex receiver to the base of the bleed screw so a wrench can hold the bleed valve in place while using another wrench to turn the bleed screw. This results in less stress on the housing and prevents cracks and leaks while bleeding the coolant. Each housing includes a new coolant temp sensor and gaskets for a complete drop in replacement.



New bleed screw/receiver design

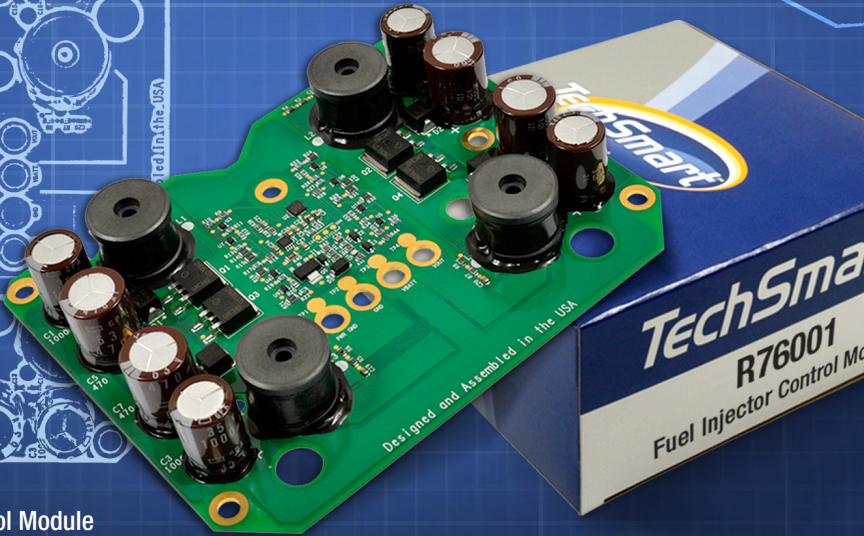
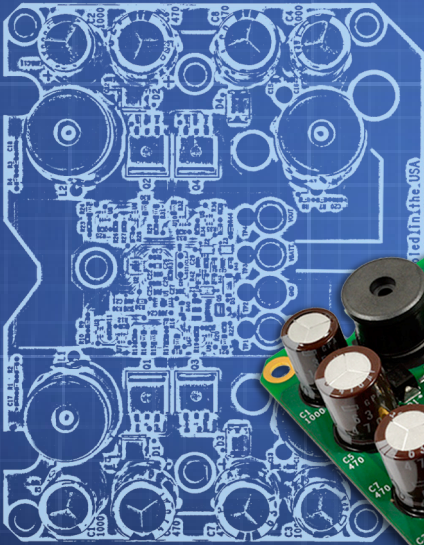
Z63010
Engine Coolant Air Bleeder Valve
Chrysler Sebring 2.7L 2006-01
Dodge Stratus 2.7L 2006-01
VIO 1.1 million

TechSmart® Fuel Injection Control Module (FICM)

The 6.0L Ford Power Stroke diesel engine utilizes a Fuel Injection Control Module (FICM) to regulate fuel flow through the vehicle's injection pump and fuel injectors. Over time, the rapid heating and cooling from normal operation takes its toll on the critical circuitry on the module's power board. In the past, when the power board failed, the only option was to buy a complete FICM assembly or half-shell kit. Not any more.

The engineers at our Orlando, Florida advanced electronics manufacturing facility tackled this critical fuel system issue by redesigning the board from the ground up, with significant performance upgrades. The result is a TechSmart® FICM power board that stands up to the toughest underhood conditions. This TechSmart® solution ensures the system failure is fixed right the first time.

- Re-engineered circuit board layout
- Higher-quality electronics cut down excess heat
- Four large coils on the board custom made to SMP spec
- Gold-plated contacts for greater energy transfer
- Built-in load dump protection to prevent high-voltage interference
- No programming necessary
- NEW, not remanufactured
- Designed and manufactured in the U.S.A.



R76001
Fuel Injector Control Module
Ford 6.0L Diesel Trucks 2010-03
VIO over 700,000



To purchase TechSmart® parts, contact your authorized SMP® supplier or representative.

TechSmart® by SMP®
3718 Northern Boulevard, Long Island City, NY 11101
©2014 TechSmart®

TS11100